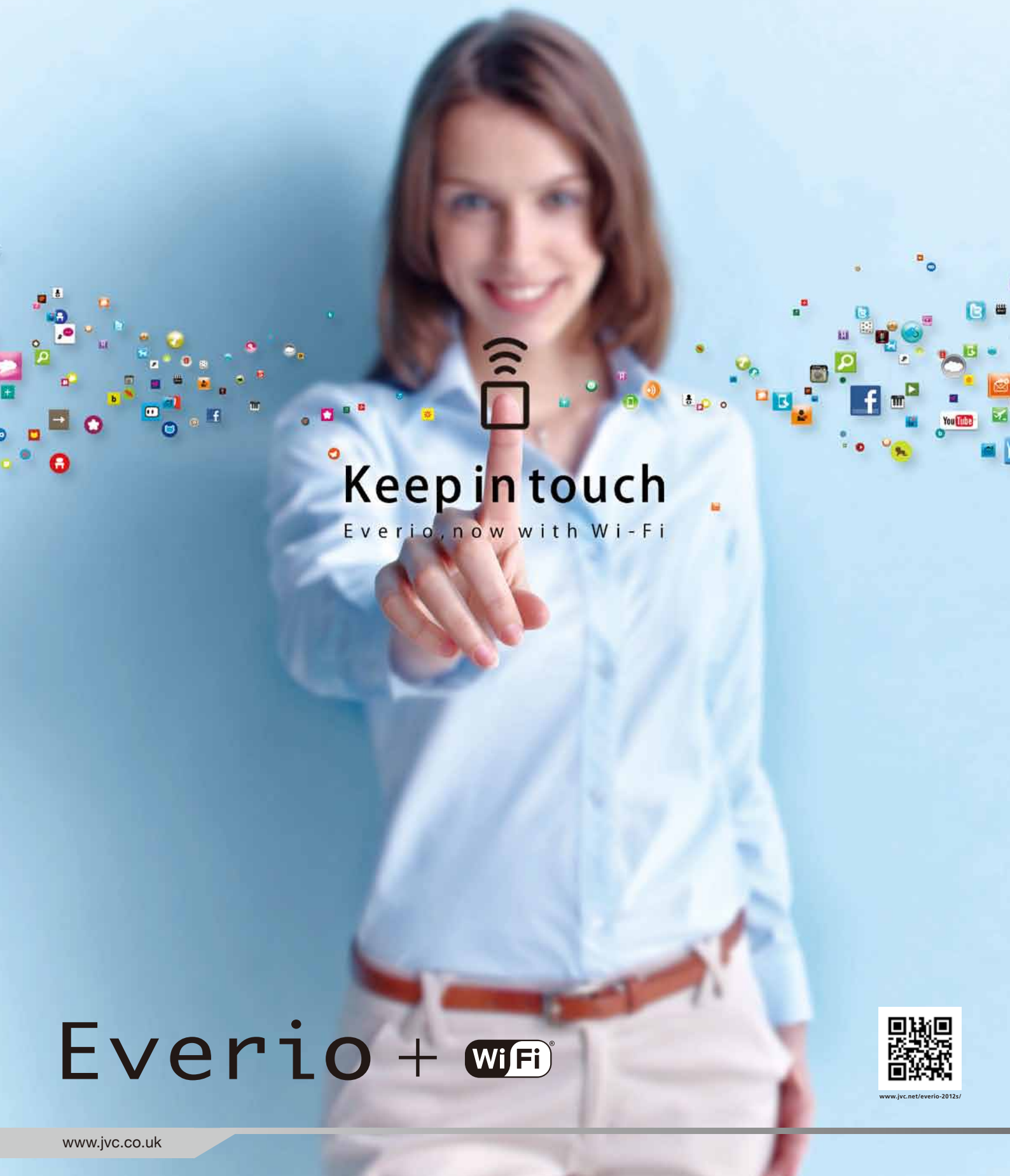


# JVC

Everio Lineup  
2012



## Keep in touch

Everio, now with Wi-Fi

# Everio +



[www.jvc.net/everio-2012s/](http://www.jvc.net/everio-2012s/)



# Everio +

## Keep in touch

Whether it's with someone in the next room or halfway around the world, Everio lets you keep in touch, right now. That's because many Everio models feature built-in Wi-Fi®. The same technology that makes wireless Internet access possible also gives you the power to see what's happening somewhere else in real time, and share your videos and stills as email attachments, without having to use a computer! Plus there are other Everio advantages, such as high zoom ratio and image stabilisation, that help you capture better images anytime. Explore a whole new world of visual communication, and keep in touch with those you love.



### E/EX Series

Everyone can easily master this entry series Everio. Highlighting Full HD image quality and convenient features in a compact body. Great way to turn your everyday into moments worth sharing.

### V/VX Series

This series is designed to make an impression with its slim body design, special look and feel. Capture scenes in captivating style.

### GX Series

Top-of-the-line series. The result of a quest for higher quality and higher performance. Built with rich, creative capabilities meant to satisfy the serious enthusiast.

**FALCONBRID™**





# Reach out now

Wi-Fi® lets you reach out and communicate visually via the wireless LAN network in your home or public Wi-Fi access point. Reach through walls and watch Everio's live video stream on your handheld device. Reach around the world immediately by sending stills or videos as email attachments.



## Live Monitoring\* Via smartphone or PC

Camera images from Everio can be transmitted to Android phones/tablets, iPhone, iPad, or PCs using Wi-Fi. Allows real-time monitoring of images taken with Everio in other places. A parent can be in one room while keeping an eye on the baby sleeping in another room. Of course, if you're miles away, monitoring via Internet is also possible.



### Wi-Fi Direct

This one-to-one wireless connection of Everio to a smartphone or PC allows real-time monitoring from another room.



Free app available for Android phones/tablets, iPhone, iPod touch, and iPad

### Via Access Point



Using the Internet, it's possible to access the Everio image feed from anywhere in the world. For instance, check whether the pets are behaving while you're away.

Note: Refer to website for prerequisite conditions.

## Home Detection Monitoring Sends an auto snapshot via email



When a subject enters the detecting area, Everio will automatically take a digital still and send it via email to your smartphone or computer through Wi-Fi. You can check on your loved ones when you're out and about. Feel safe and secure.



## Everio, now with Wi-Fi®. See what's possible.



### Video E-mail

Easy emailing a short video clip



With the Video Email mode, you can record a 15-second video clip and have it directly emailed to registered smartphone/computer addresses via Wi-Fi. You can easily send email greetings and stay in contact with those who are far away. Up to 8 recipients can be pre-set for simultaneous sending.

Image size is 640x360 pixels, suitable for net sharing.

## Smartphone Linking\*

Control, receive and share videos & stills

Free app available for Android phones/ tablets, iPhone, iPod touch, and iPad

### Geotagging

Using the GPS function on your smartphone, the current location data can be embedded into recorded video and stills. When playing back those files with Everio MediaBrowser 4 software on a PC, they synchronise with Google Earth™. A great way to visually revisit your memories!



Google Earth™ automatically starts up and shows the location where that image was recorded

Note: Geotagging is valid for Wi-Fi direct only.



### Data transfer from Everio to smartphone

Access the Everio via a smartphone with a free app. Download your recorded video and stills as you like. After that, you can easily upload them to your favorite sites like YouTube™ or Facebook using a smartphone.



Note: Video will be resized to 640x360 pixels for smartphones. In case of data transfer to a computer, native resolution will be maintained.



### Remote Recording

You can use your smartphone as a remote control, and operate Everio from a distance. You can control zoom and recording start/stop functions.



Camera control



\* Free app available for Android phones/tablets, iPhone, iPod touch, and iPad. This application supports OS2.1 or later for Android, and iOS4 or later for iPhone/iPod touch/iPad, however does not constitute a guarantee that all devices using those operating systems can use these application features. For system requirements for Wi-Fi functions, please check QR code shown on cover or visit the JVC website.

# Be creative. Be confident.

## Full HD 1920x1080 Recording

Everio offers Full HD image quality throughout the lineup. So every new Everio is capable of recording 1920x1080 resolution AVCHD video. What's more, all new Everio models support 1080P output. Enjoy uncompromising picture quality on a TV that accepts 1080P input.



AVCHD

## Super LoLux

Low light performance is one of the key factors for quality video. Everio's Super LoLux ensures superior sensitivity to low light. With a Back-illuminated CMOS sensor, you can capture clear images with precise colours even in low light. No worry while indoors or in dark situations.



Without Super LoLux



With Super LoLux

## Advanced Image Stabiliser\*

All Everio models feature Advanced Image Stabiliser (A.I.S.) for effective camera-shake compensation. It expands the effective area at wide angle, delivering powerful compensation for camera shake while maintaining HD quality. Now, you can enjoy stable results even if you're trotting alongside your subject.



A.I.S. Off



A.I.S. On

\*Especially effective when shooting bright scenes at wide angle (from full wide to 5x)

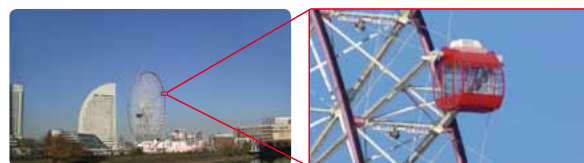
## Touch Panel LCD

Just touch on the various function icons and thumbnail pictures that are displayed on the LCD screen. The uniformly flat surface responds instantly to your touch commands, with a frameless design to assure comfortable touch access even for functions displayed on the extreme right or left.



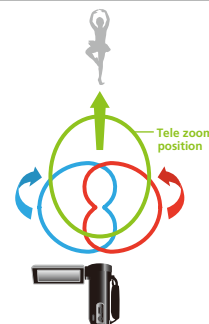
## 40x Optical Zoom

Everio E/EX Series models offer 40x optical zoom, which is the highest level in the industry. Zoom in subjects that are far away without any picture degradation. (V/VX/GX Series offers 10x optical zoom.)



## Zoom Microphone

The new zooming microphone changes the focal point to match the picture, so you can always hear what you see. Sound focus changes from wide to tele. This reduces stereo separation and increases mic gain when zooming.



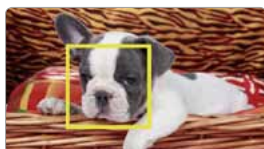
## Face Recognition for Shooting Convenience

Everio's Face Recognition technology allows you to register faces of friends and family with their names so the camera can optimise exposure and focus giving priority to them. In addition, it can be used for the following convenient functions while shooting.

### Smile Meter & Smile Shot

The Smile Meter keeps an eye on how much your subjects are smiling, giving you a % display. With Smile Shot, the camera automatically takes a picture (in video mode) every time the smile % reaches a certain level. It's a great way to take group shots filled with smiling faces.

Some models even feature Pet Detection function that detects and tracks the faces of dogs and cats, capturing them with the best setting possible. And it automatically takes stills when they face the camera directly.



### Face Sub-Window

Touch on a face on the LCD screen, and that face is automatically shown enlarged in a corner of the screen. So you can record both a group shot and a close-up of someone at the same time!



## Animation Effect

Have fun decorating while you shoot. Add stamps wherever you touch. Or spice up faces with decorations that automatically position themselves correctly. You can even add hand-written titles and captions using a provided pen as part of the recording too.



8 types of decoration



16 types of stamp



Stylus pen provided

## SDXC Card Slot

Just insert a compatible memory card into the SD/SDHC/SDXC card slot and you're ready to shoot! It supports up to 64GB SDXC card.



## Time-Lapse REC

Time-Lapse REC records one frame at a time at set intervals (1sec. – 80sec.). So you can watch movement that's hours long in just a few seconds when played back. It's great when you want to observe an event that takes place over a long period of time or to record unique-looking scenes in a creative way.



## Auto REC

When a subject enters the detecting area, recording starts automatically. Recording continues as long as there is movement within the area and automatically stops after 5 seconds of no movement. You can use it like a surveillance camera or to observe something. Discover new ways to use the camera.



Recording starts



Recording stops in 5 seconds

## And More! For Intelligent and Convenient Shooting

- **HD/SD Dual Format** (on most models): Standard Definition recording is available for broad compatibility and even longer recording.
- **Intelligent AUTO**: Automatically selects the optimal settings wherever you point the camera. Get the best possible shot anytime.
- **Auto Light / Auto Flash** (on selected models): Automatically turns on whenever the light is insufficient.
- **Silent Mode** (on most models): Mutes the operation sound and dims the LCD brightness with one button ease. No worry for dark and quiet places.
- **K2 Technology**: Restores the sound details lost during compression for high-quality audio playback.



# Aim higher. Look brighter.

## AVCHD Progressive Recording (GX Series)

In addition to Full HD, Everio GX Series even offers 1080/50p progressive recording. This means each individual frame is a complete, high-resolution picture, allowing capture of blur-less still images from recorded video with one-button ease. You just keep recording, knowing you can always go back and select your hero shot afterwards.



**AVCHD**  
Progressive



Clear, blur-less still images can be captured from video.

## Optical Image Stabilisation with Advanced Image Stabiliser

V/VX/GX Series offers double the assurance of camera shake compensation. In addition to Advanced Image Stabiliser, Optical Image Stabiliser (O.I.S.) is equipped to deliver effective results over the entire zoom range. From wide-angle to telephoto, get stable images with HD quality maintained.



Previous



V/VX/GX Series

## High-Quality, High-Performance Lens

### F1.2 Brightness

V/VX/GX Series' lens is F1.2, which is approximately two times brighter and faster than conventional camera lenses. You'll be able to record in low light environments with confidence. Record indoors or outside in darker situations with brilliant results. Record birthdays, weddings, sporting events and everyday life without the need for additional lighting.



### 29.5mm/32.8mm Wide Angle

When recording landscapes, or group shots in cramped quarters, this wide angle lens is very effective. When fully zoomed out, the angle of vision is equivalent to a 29.5mm lens (GX Series) on a 35mm SLR camera. (32.8mm for V/VX Series.)



### JVC HD GT LENS (GX Series)

New optics were custom designed and manufactured, incorporating several aspherical lenses to achieve finer image reproduction while maintaining a compact profile. Extra-low dispersion glass is used to minimise aberrations.



## High-Speed Processor FALCONBRID™ Engine

At the heart of Everio is the FALCONBRID™ imaging engine which provides high-speed processing of large amounts of pixel data for both video and stills. The one-chip design helps to reduce size and energy consumption while optimizing efficiency and speed.

**FALCONBRID™**





## Designed for Serious Shooting (GX Series)

GX Series has been designed to satisfy serious video enthusiasts. Accessory shoe allows attachment of external microphone or video light. You can also attach commercially available conversion lenses (Wide or Telephoto) for shooting in various situations.

Accessory shoe and Mic input



Conversion lens attachable

### High-Speed Continuous Still Recording

Just like the motor drive equipped on SLR cameras, this mode allows you to record stills in rapid succession. Get sharp, crisp images for every split-second of movement. Capture even fast-paced action as high quality digital stills. (Available with V/VX/GX Series)

Note: Saving may take some time after recording many continuous shots.



### 250fps High-Speed Video Recording for Super Slow Motion Playback

High-speed recording enables super slow motion playback, so you can analyse movements that may not be visible to the naked eye in real time. Use it as an effective tool for sports technique analysis and nature studies. (Available with EX/V/VX/GX Series)



## Everio MediaBrowser™ 4 PC Application

Provided with all models



All Everio models come with Everio MediaBrowser 4 software that provides everything from viewing, data management, simple video/stills editing, as well as easy sharing functions, within a single application.

### Easy Video and Still Editing

You can create full-fledged edited videos and pictures with just a few clicks. Edit video footage and stills into the same creation, spice it up with a music track, add captions, and so much more, with drag-and-drop ease!



#### Variety of video editing features




- Transition effect
- Length editing (Trimming)
- Text insert
- Music insert, etc.

### Quick Upload to Facebook/YouTube™

Share as soon as you shoot. Uploading to Facebook and YouTube™ is as easy as following just a few steps that are displayed on the screen.



# Feature Comparison Chart

		GZ-GX1	GZ-VX715	GZ-V515	GZ-EX215
					
Body colour		■	■	■	■
SDXC/SDHC/SD Card Slot*1		●	●	●	●
Image Sensor		1/2.3" 10M Back-illuminated CMOS	1/4.1" 3.3M Back-illuminated CMOS	1/4.1" 3.3M Back-illuminated CMOS	1/5.8" 1.5M Back-illuminated CMOS
Lens		JVC HD GT LENS F1.2, 29.5mm Wide	JVC HD LENS F1.2, 32.8mm Wide	JVC HD LENS F1.2, 32.8mm Wide	KONICA MINOLTA HD LENS F1.8
Zoom Ratios	Optical	10x	10x	10x	40x
	Dynamic	15x*2	18x	18x	70x (in SD)
	Digital (max.)	200x	200x	200x	200x
Wi-Fi Function (IEEE802.11b/g/n)		●	●		●
Full HD 1920x1080 Recording		●	●	●	●
AVCHD Progressive Recording		●			
Standard Definition Recording			●	●	●
1080/50P Output		●	●	●	●
FALCONBRID Engine		●	●	●	●
Super LoLux		●	●	●	●
HDMI® Terminal		●	●	●	●
LCD Size and Resolution		3.5" 920K-pixel	3.0" 230K-pixel	3.0" 230K-pixel	3.0" 230K-pixel
Touch Panel LCD		●	●	●	●
Continuous Still Recording		●	●	●	
High-Speed Video Recording		●	●	●	●
Optical Image Stabiliser		●	●	●	
Advanced Image Stabiliser		●Enhanced	●	●	●
DSC Function		●11M*3	●10M*3	●10M*3	●2M
Time-Lapse REC		●	●	●	●
Auto REC		●	●	●	●
Intelligent AUTO		●	●	●	●
Face Recognition		●	●	●	●
Smile Meter / Smile Shot		●	●	●	●
Pet Detection / Pet Shot		●	●	●	●
Face Sub-Window		●	●	●	●
Animation Effect		●	●	●	●
Silent Mode		●	●	●	●
Zoom Microphone		●	●	●	●
K2 Technology		●	●	●	●
Video Light & Flash		Auto Illumi. Light / Auto Flash	Auto Illumi. Light	Auto Illumi. Light	Auto Illumi. Light
Accessory Shoe / Mic In / Headphone Out		●			
Filter Attachable		●			
Lens Cover		Auto	Semi Auto	Semi Auto	Manual
Bundled PC Software		Everio MediaBrowser 4 BE*5 (Provided with CD-ROM)	Everio MediaBrowser 4 (Provided with CD-ROM)	Everio MediaBrowser 4 (Provided in camera)	Everio MediaBrowser 4 (Provided with CD-ROM)
PC-less Archiving to External HDD/BD Burner		●	●	●	●
Provided Battery		BN-VG114	BN-VG212	BN-VG212	BN-VG114
Remote Control		●			
HDMI® Cable provided		●	●	●	
Dimensions with battery (mm)		57x63x129	36x57x115.5	36x57x115.5	51x55x119
Weight with battery (g)		400	235	230	235

Approx. recording times for  
each storage media

GZ-GX1		SDXC/SDHC Card			
Mode		64GB	32GB	16GB	8GB
HD 1920x1080	50P	5hr	2hr 30min	1hr 10min	35min
	UXP	5hr 40min	2hr 50min	1hr 20min	40min
	XP	8hr 10min	4hr	2hr	1hr
	SP	11hr 30min	5hr 50min	2hr 50min	1hr 20min
	EP	28hr 50min	14hr 40min	7hr 10min	3hr 30min

Note: Not all models available in every region.

GZ-EX210	GZ-E205	GZ-E200	GZ-E15	GZ-E10
				
				
				
1/5.8" 1.5M Back-illuminated CMOS	1/5.8" 1.5M Back-illuminated CMOS	1/5.8" 1.5M Back-illuminated CMOS	1/5.8" 1.5M Back-illuminated CMOS	1/5.8" 1.5M Back-illuminated CMOS
KONICA MINOLTA HD LENS F1.8	KONICA MINOLTA HD LENS F1.8	KONICA MINOLTA HD LENS F1.8	KONICA MINOLTA HD LENS F1.8	KONICA MINOLTA HD LENS F1.8
40x	40x	40x	40x	40x
70x (in SD)	70x (in SD)	70x (in SD)	70x (in SD)	
200x	200x	200x	200x	200x
				
				
				
				
				
				
3.0" 230K-pixel	3.0" 230K-pixel	3.0" 230K-pixel	2.7" 230K-pixel	2.7" 230K-pixel
				
				
				
●2M	●2M	●2M		
				
				
				
			Face Detection	Face Detection
				
				
				
	●+4	●+4		
				
				
				
	Auto Illumi. Light			
Manual	Manual	Manual	Manual	Manual
Everio MediaBrowser 4 (Provided with CD-ROM)	Everio MediaBrowser 4 (Provided in camera)	Everio MediaBrowser 4 (Provided in camera)	Everio MediaBrowser 4 (Provided in camera)	Everio MediaBrowser 4 (Provided in camera)
				
BN-VG114	BN-VG108	BN-VG108	BN-VG108	BN-VG108
51x55x119	51x55x119	51x55x119	51x55x119	51x55x119
235	215	215	215	215

\*1 To record video, SD/SDHC/SDXC card with Class 4 or higher performance is required. SD memory cards (256MB to 2GB), SDHC memory cards (4GB to 32GB) and SDXC memory cards (48GB to 64GB) have been tested for the following brands: Panasonic, Toshiba, SanDisk. Note that using other media may result in recording failure or data loss. For compatibility of memory cards, please consult an authorised JVC dealer.

\*2 12x when Advanced Image Stabiliser set to ON

\*3 In Ultra Resolution mode

\*4 Face Decoration, Stamp, and Hand Writing are not available.

\*5 Supports easy export to iTunes and BD creation.

## Other Models

Other Models		SDXC/SDHC Card			
Mode		64GB	32GB	16GB	8GB
HD 1920x1080	UXP	5hr 40min	2hr 50min	1hr 20min	40min
	XP	8hr 10min	4hr	2hr	1hr
	SP	11hr 30min	5hr 50min	2hr 50min	1hr 20min
	EP	28hr 50min	14hr 40min	7hr 10min	3hr 30min
	SD* 720x576	SSW	22hr 20min	5hr 30min	2hr 40min
	SEW	46hr 10min	23hr 30min	11hr 30min	5hr 40min

\*Except for GZ-E10

## Optional Accessories

### Battery and Charger

For E/EX/GX Series

**BN-VG114**  
Data Battery  
• 3.6V, 1400mAh



**BN-VG121**  
Data Battery  
• 3.6V, 2100mAh



**BN-VG138**  
Data Battery  
• 3.6V, 3750mAh



For V/VX Series

**BN-VG212**  
Battery  
• 3.7V, 1200mAh



**BN-VG226**  
Battery  
• 3.7V, 2600mAh  
(Available in summer 2012)

**AA-VG1**  
Battery Charger  
• For charging  
BN-VG114/  
VG121/VG138



#### Attention:

Be sure to use only genuine JVC batteries to operate JVC video cameras. JVC cannot guarantee safety or performance of the video camera when it is operated by other batteries. Usage of other batteries may result in malfunction, injury, or other damage. For assured, optimised performance, choose genuine JVC batteries.

### Provided Accessories

- AC Power Adapter
- Rechargeable Battery Pack
- AV Cable
- USB Cable
- HDMI® Cable (GZ-GX1/VX715/V515)
- Remote Control (GX Series)
- Software CD-ROM (Wi-Fi equipped models\*)

\*For other models, software is provided in the camera.

### Starter Kit

For E/EX/GX Series

**VU-VG1K**  
Starter Kit  
• Data Battery &  
Carrying Bag



**VU-VG5K**  
Starter Kit  
• Data Battery &  
Carrying Case



For V/VX Series

**VU-VG7K**  
Starter Kit  
• Battery & Carrying Case

### Carrying Bag

**CB-VM89**  
Carrying Bag  
• Can carry Everio with its  
series of accessories



### HDMI® Cable

**VX-HD315F**  
HDMI® Cable  
• HDMI® - HDMI® mini cable, 1.5m



Note: Not all accessories available in every region. Please check with your dealer.

### Storage and Playback Solution

Recommended Hard Disk Drive/BD Burner

Just connect with Everio via USB\*. Recorded data can be stored and played back with easy operation via connected Everio.

\*Optional USB cable required.

**FreeAgent™ Desk**



**Hard Disk, Design by  
Neil Poulton**



**LG Blu-ray Drive  
BE12LU30**



### Software System Requirements (Windows®)

OS:	Microsoft® Windows® XP SP3, Home Edition/Professional (pre-installed) Microsoft® Windows Vista® SP2, Home Basic/Home Premium (32-bit/64-bit, pre-installed) Microsoft® Windows® 7 SP1, Home Premium (32-bit/64-bit, pre-installed)
CPU:	When using HD Video: Intel® Core™ Duo 1.66GHz or higher (Intel® Core™ 2 Duo 2.13GHz or higher recommended), Intel® Core™ i7 2.53GHz or higher recommended for HD video editing When using SD video: Intel® Pentium® 4 3GHz or higher (Intel® Pentium® D3.0GHz or higher recommended), Intel® Core™ 2 Quad 2.4GHz or higher recommended for SD video editing
RAM:	Windows® XP: 1GB or higher, Windows Vista®/Windows® 7: 2GB or higher
GPU:	Intel G965 (on-board VGA) or higher

Note: Software for Macintosh is not included. The applicable software is required. The system requirements information above is not a guarantee that the provided software will work on all personal computers meeting those requirements.

Design and specifications subject to change without notice. The photos of the products featured on this catalogue may not be of actual products that are available in your country.

It should be noted that it may be unlawful to re-record pre-recorded tapes, records, or discs without the consent of the owner of copyright in the sound or video recording, broadcast or cable programme and in any literary, dramatic, musical, or artistic work embodied therein.

Microsoft® and Windows® are either registered trademarks or trademarks of Microsoft Corporation in the United States and/or other countries. This product's YouTube™ upload functionality is included under license from YouTube LLC. The presence of YouTube™ upload functionality in this product is not an endorsement or recommendation of the product by YouTube LLC. YouTube and the YouTube logo are trademarks and/or registered trademarks of YouTube LLC. The Wi-Fi Logo is a certification mark of the Wi-Fi Alliance. "AVCHD" and the "AVCHD" logo are trademarks of Panasonic Corporation and Sony Corporation. Dolby and the double-D symbol are registered trademarks of Dolby Laboratories. HDMI, the HDMI logo and High-Definition Multimedia Interface are trademarks or registered trademarks of HDMI Licensing LLC. The SD, SDHC, and SDXC logos are trademarks of the SD Card Association. QR Code is registered trademark of DENSO WAVE INCORPORATED. All brand names are trademarks, registered trademarks, or trade names of their respective holders. Screen images and print samples on this catalogue are simulated unless otherwise specified.

Copyright© 2012, JVC KENWOOD Corporation

# JVC

AVAILABLE AT