

JVC

4K-compatible HD studio monitors



DT-G17E

DT-G21E

DT-G24E

DT-G27E



4K compatibility

Zero latency mode

Built-in 3D LUT auto calibration

Remote control via web browser





KEY FEATURES

■ Full HD LCD panels

DT-G series studio monitors use 17.3" / 21.5" / 23.8" / 27" 1920x1080 pixel full HD resolution LCD panels with LED backlighting.

■ Supports 4K-HDMI and 3G-SDI

DT-G series monitors support up to 4K60p HDMI, which can be downsampled to FHD display, and support 3G-SDI (SMPTE 425M) including Level A&B. 2K-SDI (2048x1080p) can also be downsampled to FHD display.

■ New zero latency mode

Almost zero latency* available via a special image processing mode for lip-sync monitoring.

* Only a few lines' delay. Please note that in this mode, no picture correction is possible.

■ Selectable gamma preset

Supports gamma preset selection from: 1.8, 2.2, 2.4, 2.6.

■ Webserver IP remote control

Connect the monitor to a LAN and read the monitor status or set menu by computer web browser, which enables studio administrators to control all the monitors remotely.

■ TSL UMD and user-editable video title

Supports UMD controlling input via RS485 port, compatible with TSL 3.1 and 4.0 UMD protocol. Users can also edit a fixed video title for the monitor, plus the UMD/title letter size, colour and background are selectable.

■ On-screen TALLY display

Displays on-screen TALLY signals of Red / Green / Yellow colours, with on-screen TALLY display position up/down and blinking on/off are selectable.

■ USB firmware upgradable

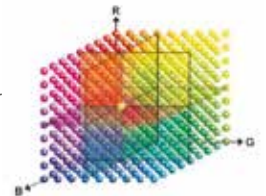
The rear USB port is for firmware upgrades. Users can download firmware to a USB stick, and operate the monitor menu to upgrade, without PC or other adaptors.

■ Other features

- SDI Timecode (LTC, VITC1&2) display
- AFD (Active Format Description) info display
- Frame/Field view selection
- R/G/B/Mono, False color, Zebra stripes display
- Focus assist display mode
- H/V delay, freeze frame display mode
- Safety area selection: 80%, 85%, 90%, 93%, 95%
- Scale marker: 4:3, 13:9, 14:9, 15:9, 1.85:1, 2.35:1
- Native scan, over scan and normal scan selection
- GPI control via RS485 port connection
- 3 user settings for data storage
- 6 user-definable function keys
- V-mount battery plate for field application (AntonBauer plate is an option)
- Rack mount included on DT-G17E

■ 3D LUT auto colour calibration

DT-G series monitors support 3D LUT 17x17x17 precise auto calibration, with built-in colour generator and calibration software. They currently support the X-rite i1 Display (special version) and will support JETI Specbos 1211 (near-future update). Probes directly plug into monitor USB port for auto calibration; the calibration process time is as short as 30 minutes.



■ Built-in De-log LUTs

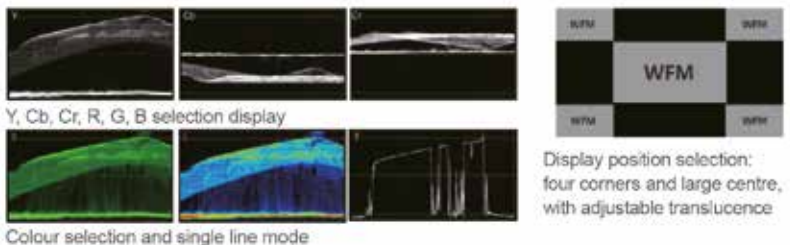
DT-G series monitors have built-in De-log LUTs including JVC J-log1, ARRI Log-C, SONY S-log2, S-log3, Canon C-log, Panasonic V-log and RedLogFilm LUTs, to convert to ITU-Rec.709 directly.

■ User 3D LUT upload

DT-G series monitors support user 3D LUT cube files to upload by USB, which is convenient for colour creation during post-production monitoring.

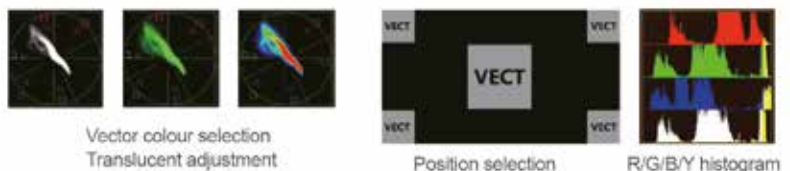
■ Built-in waveform monitor

Supports waveform selection display (Y, Cb, Cr, R, G, B), and also supports single lines waveform display. The waveform pattern position can be selected from one of four corners or the centre in a larger size. Waveform display colour can be selected from white, green and false colour, with the translucence also selectable.



■ Built-in vector scope and histogram monitor

Supports vector scope and R/G/B/Y histogram display. The vector scope colours can be selected from white, green and false colour, and the position of the patterns can be selected from one of four corners and the translucent is also selectable.



■ 16-ch audio level meters with alert and output selection

Supports de-embed audio from SDI and HDMI, and displays 16-ch audio level meters, with abnormal audio alerts info displayed on each audio bar. You can also select any 2 channels audio to output via 3.5mm socket or speakers. The audio meter pattern position can be selected from one of four corners, and you can select to display only 2 channels, 8 channels or 16 channels. Also scale markers, alert info, and translucent of the audio meter pattern are selectable.



FRONT PANEL



REAR PANEL



DT-G27E pictured, although all four DT-G models have the same front control and rear interfaces.

COMPATIBLE VIDEO FORMATS

| | | |
|----------------|--------------|--|
| CVBS | | NTSC / PAL |
| Y/Pb/Pr | | 1080i (50 / 60), 720p (50 / 60), 480i, 480p, 576i, 576p |
| RGB | | 640x480, 800x600, 1024x768, 1152x864, 1280x768, 1280x960, 1280x1024, 1600x1200 |
| HDMI | | 4096x2160p (60 / 59.94 / 50 / 30 / 29.97 / 25 / 24 / 23.98) |
| | | 3840x2160p (60 / 59.94 / 50 / 30 / 29.97 / 25 / 24 / 23.98) |
| | | 1080p (60 / 59.94 / 50 / 30 / 29.97 / 25 / 24 / 23.98) |
| | | 1080i (60 / 59.94 / 50) |
| | | 720p (60 / 59.94 / 50) |
| | | 480i / 576i / 480p / 576p |
| SDI | SMPTE 2048-2 | 2048x1080p (23.98 / 24 / 25 / 29.97 / 30 / 50 / 59.94 / 60) |
| | | 2048x1080i (50 / 59.94 / 60) |
| | SMPTE-425M | 1080p (60 / 59.94 / 50) |
| | SMPTE-274M | 1080i (60 / 59.94 / 50); 1080p (30 / 29.97 / 25 / 24 / 23.98) |
| | SMPTE-RP211 | 1080psf (30 / 29.97 / 25 / 24 / 23.98) |
| | SMPTE-296M | 720p (60 / 59.94 / 50) |
| | SMPTE-125M | 480i (59.94) |
| ITU-R BT.656 | 576i (50) | |

SPECIFICATIONS

| MODEL | DT-G17E | DT-G21E | DT-G24E | DT-G27E |
|------------------------------|-------------------------------------|-------------------------|-------------------------|-------------------------|
| LCD Display | | | | |
| Size | 17.3 inches wide format | 21.5 inches wide format | 23.8 inches wide format | 27 inches wide format |
| Display area | 381.89mm × 241.81mm | 476.64mm × 268.11mm | 527.04mm × 296.46mm | 598mm × 336mm |
| Resolution | 1920×1080 | 1920×1080 | 1920×1080 | 1920×1080 |
| Colour depth | 16.77 million | 16.77 million | 16.77 million | 16.77 million |
| Aspect ratio | 16:9 (4:3 adjustable) | 16:9 (4:3 adjustable) | 16:9 (4:3 adjustable) | 16:9 (4:3 adjustable) |
| Brightness | 300cd/m2 | 250cd/m2 | 250cd/m2 | 250cd/m2 |
| Contrast | 700:1 | 1000:1 | 1000:1 | 1000:1 |
| Viewing angle | 160°(H) / 160°(V) | 178°(H) / 178°(V) | 178°(H) / 178°(V) | 178°(H) / 178°(V) |
| Surface treatment | Non-glass | Non-glass | Non-glass | Non-glass |
| Backlighting | LED | LED | LED | LED |
| Input signal | | | | |
| SDI input | 2K/3G/HD/SD-SDI ×2 | 2K/3G/HD/SD-SDI ×2 | 2K/3G/HD/SD-SDI ×2 | 2K/3G/HD/SD-SDI ×2 |
| HDMI input | HDMI 2.0 ×1 | HDMI 2.0 ×1 | HDMI 2.0 ×1 | HDMI 2.0 ×1 |
| Component input | Y×1; Pb×1; Pr×1 | Y×1; Pb×1; Pr×1 | Y×1; Pb×1; Pr×1 | Y×1; Pb×1; Pr×1 |
| Composite input | CVBS ×1 | CVBS ×1 | CVBS ×1 | CVBS ×1 |
| RGB input | RGB ×1 | RGB ×1 | RGB ×1 | RGB ×1 |
| Audio input | RCA L×1; R×1 | RCA L×1; R×1 | RCA L×1; R×1 | RCA L×1; R×1 |
| UMD input | RS485 ×1 | RS485 ×1 | RS485 ×1 | RS485 ×1 |
| GPI input | RS485 ×1 | RS485 ×1 | RS485 ×1 | RS485 ×1 |
| LAN input | RJ45 ×1 | RJ45 ×1 | RJ45 ×1 | RJ45 ×1 |
| USB input | USB-A Front ×1; Rear ×1 | USB-A Front ×1; Rear ×1 | USB-A Front ×1; Rear ×1 | USB-A Front ×1; Rear ×1 |
| Output signal | | | | |
| SDI loop output | 2K/3G/HD/SD-SDI ×2 | 2K/3G/HD/SD-SDI ×2 | 2K/3G/HD/SD-SDI ×2 | 2K/3G/HD/SD-SDI ×2 |
| HDMI loop output | HDMI 2.0 ×1 | HDMI 2.0 ×1 | HDMI 2.0 ×1 | HDMI 2.0 ×1 |
| Composite loop output | CVBS ×1 | CVBS ×1 | CVBS ×1 | CVBS ×1 |
| Audio output | 3.5mm ×1; Speaker ×2 | 3.5mm ×1; Speaker ×2 | 3.5mm ×1; Speaker ×2 | 3.5mm ×1; Speaker ×2 |
| UMD output | RS485 ×1 | RS485 ×1 | RS485 ×1 | RS485 ×1 |
| General | | | | |
| AC input | AC 100-240V 50/60Hz | AC 100-240V 50/60Hz | AC 100-240V 50/60Hz | AC 100-240V 50/60Hz |
| DC input | DC / battery 11V-17V | DC / battery 11V-17V | DC / battery 11V-17V | DC / battery 11V-17V |
| Power consumption | Max 34.1W | Max 36.3W | Max 38.5W | Max 39.6W |
| Working temperature | 0°C to +40°C | 0°C to +40°C | 0°C to +40°C | 0°C to +40°C |
| Working humidity | 10% - 90% | 10% - 90% | 10% - 90% | 10% - 90% |
| Storage temperature | -15°C - +60°C | -15°C - +60°C | -15°C - +60°C | -15°C - +60°C |
| Storage humidity | 10% - 90% | 10% - 90% | 10% - 90% | 10% - 90% |
| VESA standard | 100×100mm, plus rack mount included | 100×100mm | 100×100mm | 100×100 & 200×100mm |
| Dimensions | 419.2 × 310.4 × 55.8mm | 522.3 × 357.5 × 55.8mm | 572.7 × 386.2 × 55.8mm | 643.5 × 426 × 55.8mm |
| Net weight | 3.95 Kg | 5.8 Kg | 6.8 Kg | 7.95 Kg |