

Full Screen Graphics and Slide Show



KY-PZ100BEBC



Broadcast Info Overlay



KY-PZ100WEBC

Position 1



Preset Position Overlay

Position 2



An innovative, affordable live streaming HD PTZ camera featuring various overlay capabilities including preset position overlay and broadcast info overlay. Full-screen graphics display with slide show also available.

New Overlay Functions

Preset Position Overlay

- Saves overlay info at every preset position (up to 10).
- Automatically recalls saved overlay info according to the switched camera position.
- Various language characters supported with provided software SDP Generator.

Full-Screen Graphics Overlay and Slide Show

- Up to 50 full-screen (max. 23MB) custom graphics can be stored in the camera for overlaying on a streamed video and recorded video. Manual or automatic slide show is also available.

Broadcast Info Overlay

- Customisable graphic overlays (on/off switchable).
- Broadcaster logos, "Live" mark, watermark, time and temperature can be overlaid.
- Selectable pre-loaded logos.

Basic Features

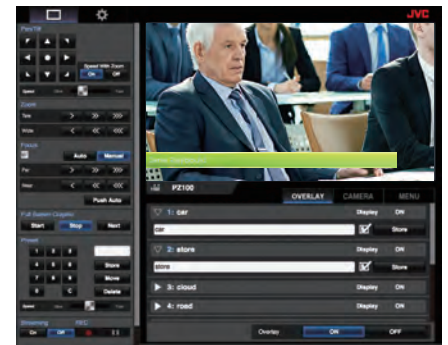
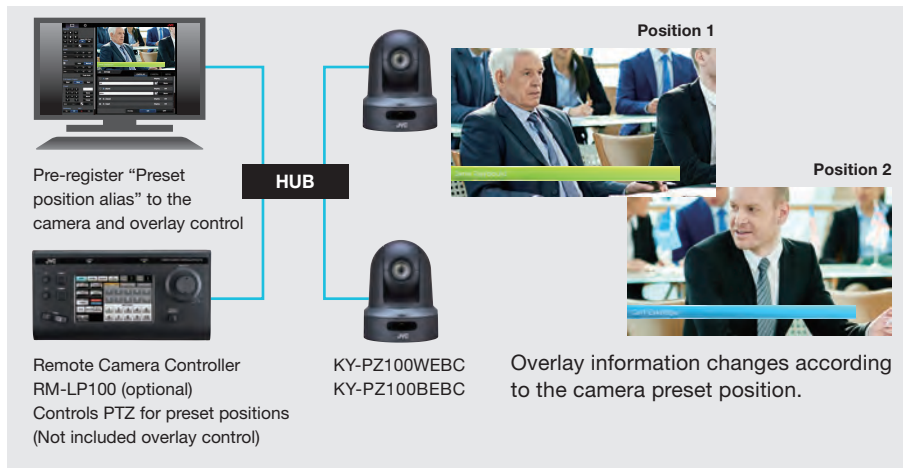
- Versatile connectivity with wired LAN, Wi-Fi, or 4G/LTE. Can be controlled with PC and RM-LP100 Remote Camera Controller.
- Powerful 30x optical zoom.
- Direct drive mechanism for accurate and quiet Pan/Tilt.
- 0.02 lx of minimum illumination for precise colour reproduction.
- Simultaneous output of 3G-SDI and HDMI in addition to IP.
- Recording on microSDHC/microSDXC card.
- 100 preset positions and settings (Up to 10 preset position overlay).

Zero Config Supported

- Simple connection with Streamstar IP switcher system.

Preset Position Overlay

- Saves overlay information (for name of the person, place, etc.) at every preset position (up to 10).
- Automatically recalls saved overlay information according to the switched camera position.
- Overlay designs can be created in various language characters using JVC's SDP Generator (free software).



Camera controls and overlay customisation screen with browser on PC

Full-Screen Graphics Overlay and Slide Show

- Stores up to 50 full-screen custom graphics (PNG or JPG format) in the camera to overlay on live streaming and HD recording.
- Graphics can be advanced manually or presented as a looping slide show with timing of 1 – 99 seconds* per slide.

*Time is approximate. It does not necessarily guarantee that switching the slide precisely at set seconds.



Displays stored image files in near screen-wide size. Useful for showing announcements or various information at a certain interval.

Broadcast Info Overlay for Streaming and Recording

- Characters can be input from a PC via LAN, Wi-Fi, or 4G/LTE. Four statements are storable and switchable during live streaming and recording.
- Four colour variation designs are selectable for text overlay areas (Background for TEXT1, TEXT2, Time, and Temperature).
- "LIVE" mark and position-selectable "Watermark" can also be displayed.

Watermark (Imported and movable)

TEXT 1: Programme Name, etc.



"LIVE" mark (Pre-installed or imported mark)

Logo (Imported mark)

TEXT 2: News Title, Reporter Name, etc.

Time Temperature

Zero Config

- With Streamstar IP Switcher system, automatic camera detection and settings are available. Connection is simple and easy.

JVCKENWOOD

DISTRIBUTED BY

Simulated pictures.
E.&O.E. Design and specifications subject to change without notice.
Copyright © 2018, JVCKENWOOD Corporation. All Rights Reserved.